



GS Lounge Armchair

by Giuseppe Scapinelli, 1950

Designed by Giuseppe Scapinelli in the 1950s, the GS is one of his most striking armchairs; in its sinuous shapes, he created a piece that is both alluring and futuristic. The armchair is defined by the elegant wooden details on its sculpted, barred high back.

- Available in honey canela wood;
- Available in a variety of fabrics, leathers, COM/COL;
- Reissued by Etel;
- Made to order

DIMENSIONS

W 28" x D 25" x H 35"

PRODUCT TYPE

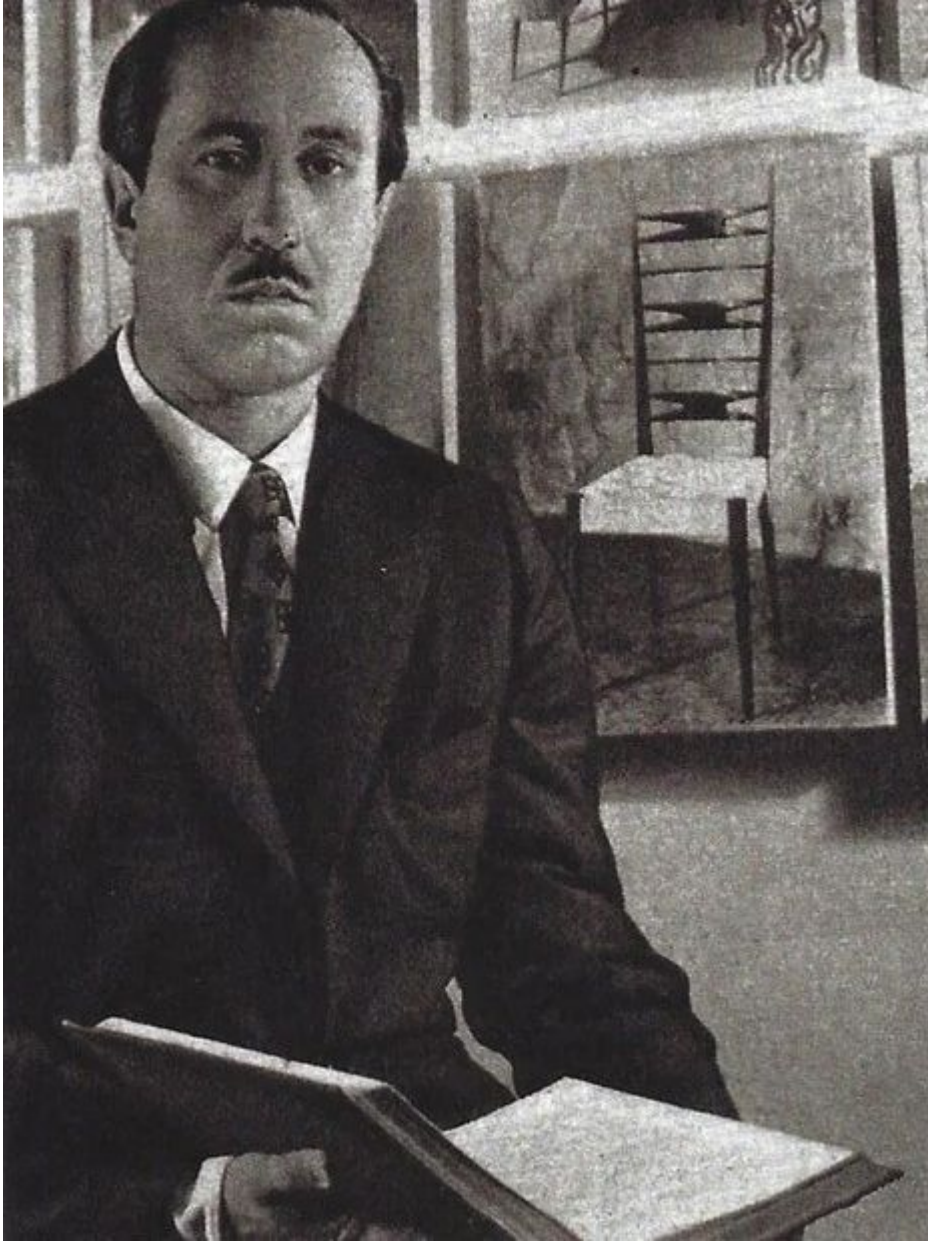
Made To Order

LEAD TIME

20 weeks

ESPASSO





Giuseppe Scapinelli

Giuseppe Scapinelli was born in 1891 in Modena, Italy, but chose Brazil as his second home. He became a successful furniture maker and retailer in 1950s in São Paulo with his furniture factory, Fábrica de Móveis Giesse, and his carpet factory, Fábrica de Tapetes Santa Helena.

His pieces are impeccably crafted in Brazilian traditional wood. His style set him apart from the main industry players at the time for its soft shapes and curvy lines.

He designed and produced many unique pieces for distinctive São Paulo homes before passing away in 1982.