



Zeca Dining Chair

by Jorge Zalszupin, 1959

Modernists became enamored by wooden chairs whose designs incorporated wicker, seen as an archetype for mid-century modern furniture. Jorge Zalszupin is among the designers who engaged in his traditional combination, while incorporating his own style; the 'Zeca' dining chair is elegant, minimal, and spartan.

- Available in variety of Imbuia and woods
- Removable upholstery pillow available in a variety of fabrics, leathers, and suedes
- Reissued by Etel
- Made to order

PRODUCT TYPE

To Be Ordered

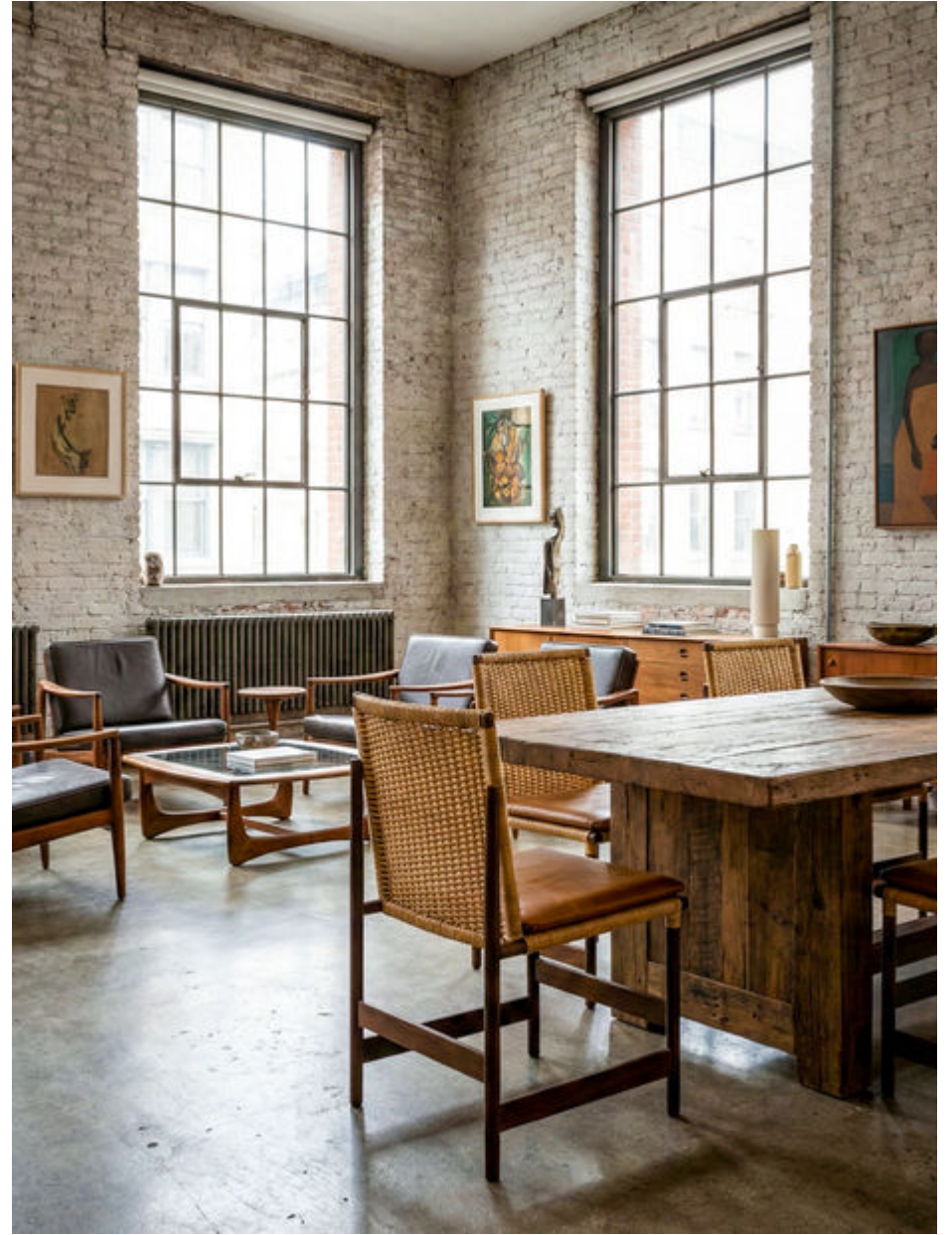
DIMENSIONS

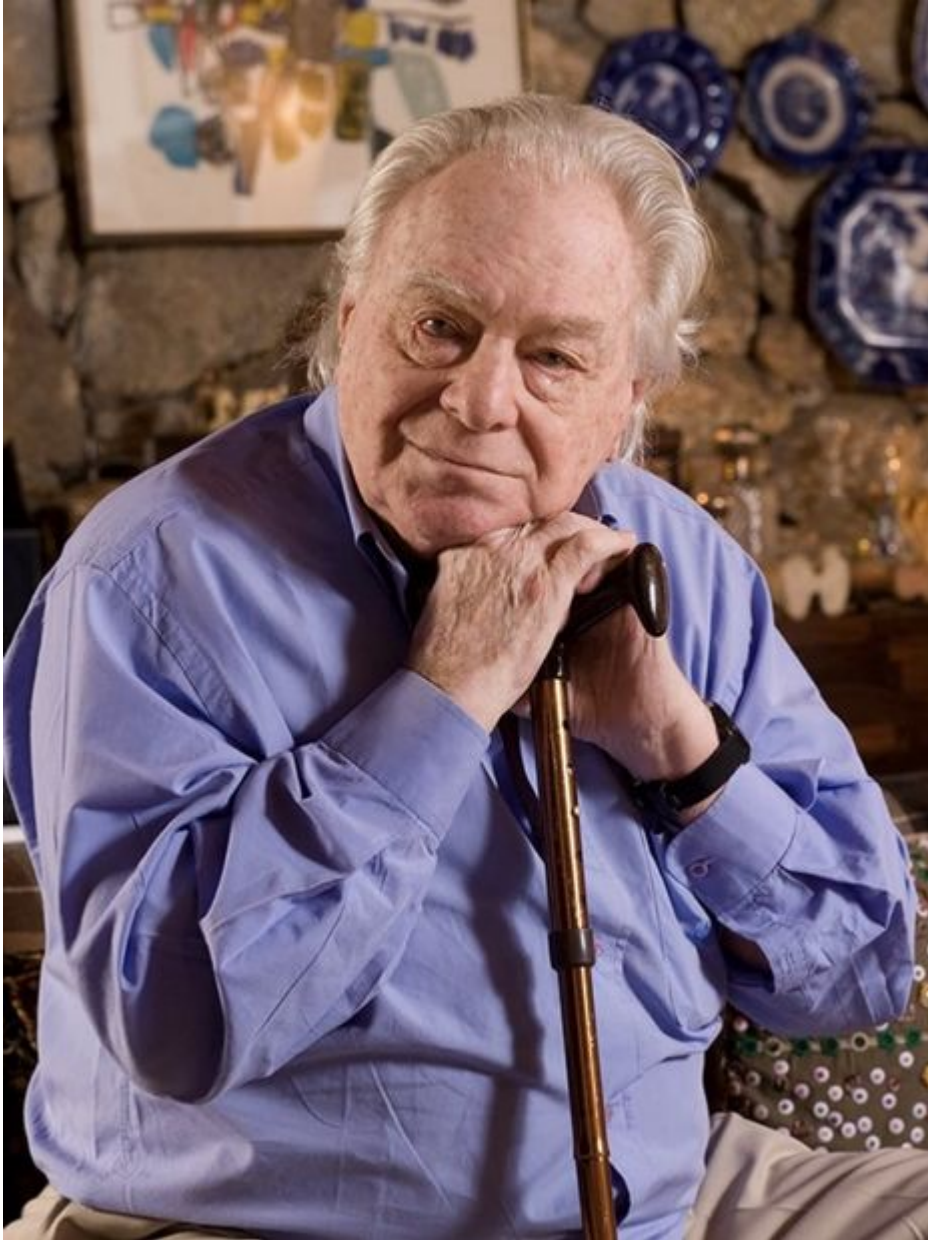
W 17" x D 17" x H 31"

LEAD TIME

20 weeks

ESPASSO





Jorge Zalszupin

The Polish born Jorge Zalszupin moved to Brazil after World War II, where he found an opportunity to develop his extremely sensual, modern architecture. A desire to rebuild a new post-war world and a wave of development in Brazil proved an ideal time for this creative atmosphere to flourish. Graceful lines, strong use of local woods and a combination of impeccable woodworking and classical detailing mark Zalszupin's furniture. He became part of a select team of talented furniture designers, who worked closely with Oscar Niemeyer on the conception and production of furniture for the new federal capital. The pieces he designed during this time utilized the luxury of leather and combined it with classical Brazilian rosewood.

A significant part of Zalszupin's furniture production is tributary to his architecture. He used new design language and tendencies, while maintaining a functional view of ambience for internal spaces. The need to create a successful harmony between architecture and his furniture was the reason behind establishing his own company L'Atelier. L'Atelier was a design collective comprised of architects, engineers, craftsmen and a full-scale team of professionals that did everything from researching materials to the finalizing the product. With the birth of the utopic Brasilia during the 1960's and 1970's, virtually no public building was left unmarked by the brand's creations. L'Atelier's designs stand as benchmarks of modernism to this day.

Zalszupin's furniture designs are characterized by both geometric lines and organic shapes combined with well-defined proportions, graceful lines and classical detailing. The quality of his furniture has transcended time and his pieces have become timeless. Zalszupin's production established a dialogue very close to the artisanal traditions of working with wood, ensuring quality...