



## GS Lounge Armchair

by Giuseppe Scapinelli, 1950

A rare pair of vintage lounge armchairs by Giuseppe Scapinelli distinguished by the elegant wooden detailing on their sculpted, barred high back.

- Base made in solid caviúna wood
- Cotton upholstery

### **DIMENSIONS**

W 26" x D 24" x H 34", SH 15"

### **PRODUCT TYPE**

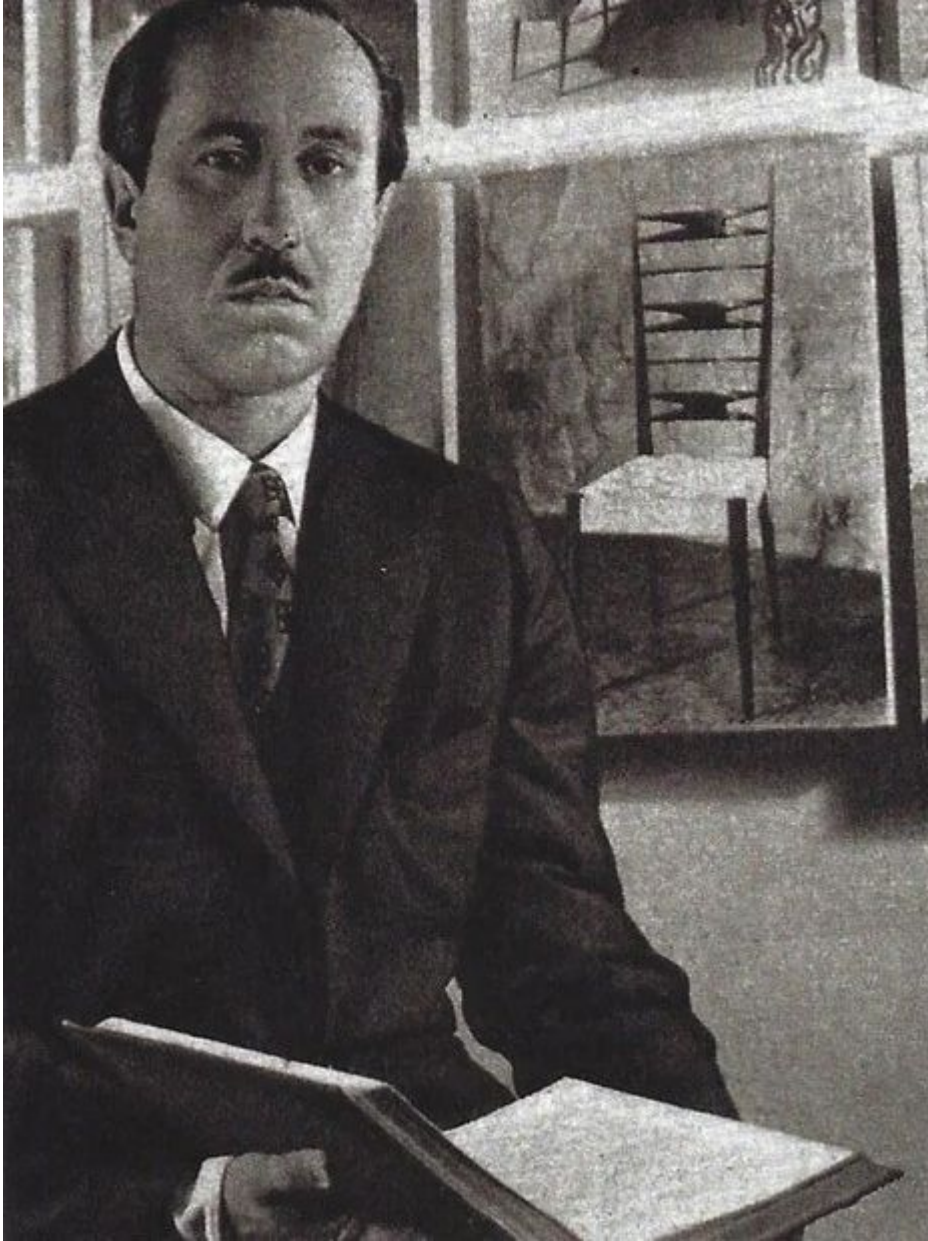
Vintage

# ESPASSO



# ESPASSO





## Giuseppe Scapinelli

Giuseppe Scapinelli was born in 1891 in Modena, Italy, but chose Brazil as his second home. He became a successful furniture maker and retailer in 1950s in São Paulo with his furniture factory, Fábrica de Móveis Giesse, and his carpet factory, Fábrica de Tapetes Santa Helena.

His pieces are impeccably crafted in Brazilian traditional wood. His style set him apart from the main industry players at the time for its soft shapes and curvy lines.

He designed and produced many unique pieces for distinctive São Paulo homes before passing away in 1982.