



## GS3 Dining Chair

by Giuseppe Scapinelli, 1950

The elegant GS3 dining chair, designed by architect Giuseppe Scapinelli in the 1950s, possess a unique back: three wooden pieces with widened middles.

- Upholstery offered in a variety of fabrics, COM/COL
- Part of Etel Collection
- Made to order

### **DIMENSIONS**

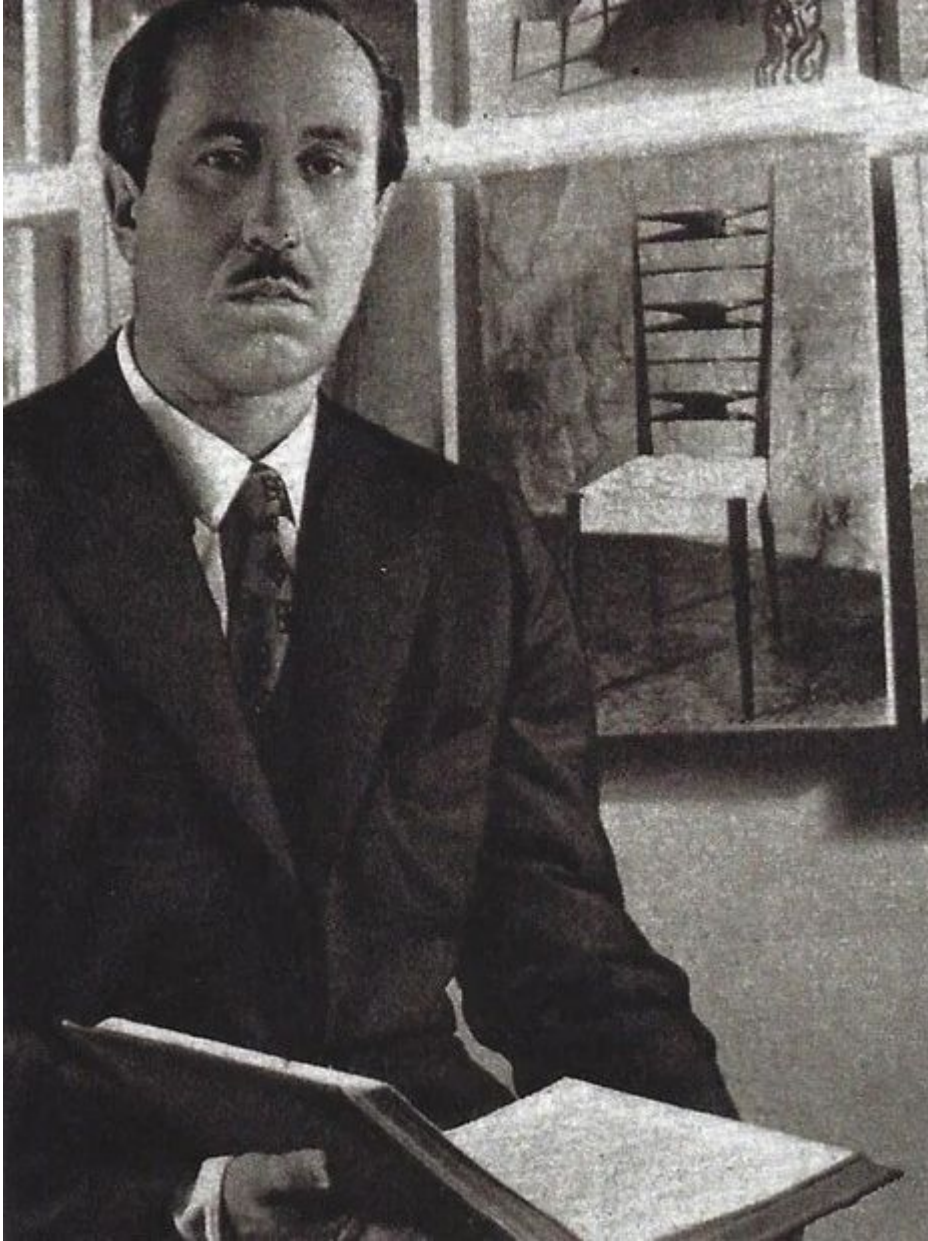
W 18" x D 23" x H 35", SH 19"

### **PRODUCT TYPE**

Made To Order

### **LEAD TIME**

20 weeks



## Giuseppe Scapinelli

Giuseppe Scapinelli was born in 1891 in Modena, Italy, but chose Brazil as his second home. He became a successful furniture maker and retailer in 1950s in São Paulo with his furniture factory, Fábrica de Móveis Giesse, and his carpet factory, Fábrica de Tapetes Santa Helena.

His pieces are impeccably crafted in Brazilian traditional wood. His style set him apart from the main industry players at the time for its soft shapes and curvy lines.

He designed and produced many unique pieces for distinctive São Paulo homes before passing away in 1982.