



PPD Sofa

by Carlos Motta, 2013

Made from reclaimed peroba rosa wood and expansive upholstery, the ultra comfortable PPD sofa combines a rustic yet clean design, representative of Carlos Motta's sophisticated, sustainable and laid-back stance.

- Base made from reclaimed peroba rosa wood
- Fabric or Leather upholstery

DIMENSIONS

W 98" x D 37" x H 31", SH 15", AH 22"

W 106" x D 37" x H 31", SH 15", AH 22"

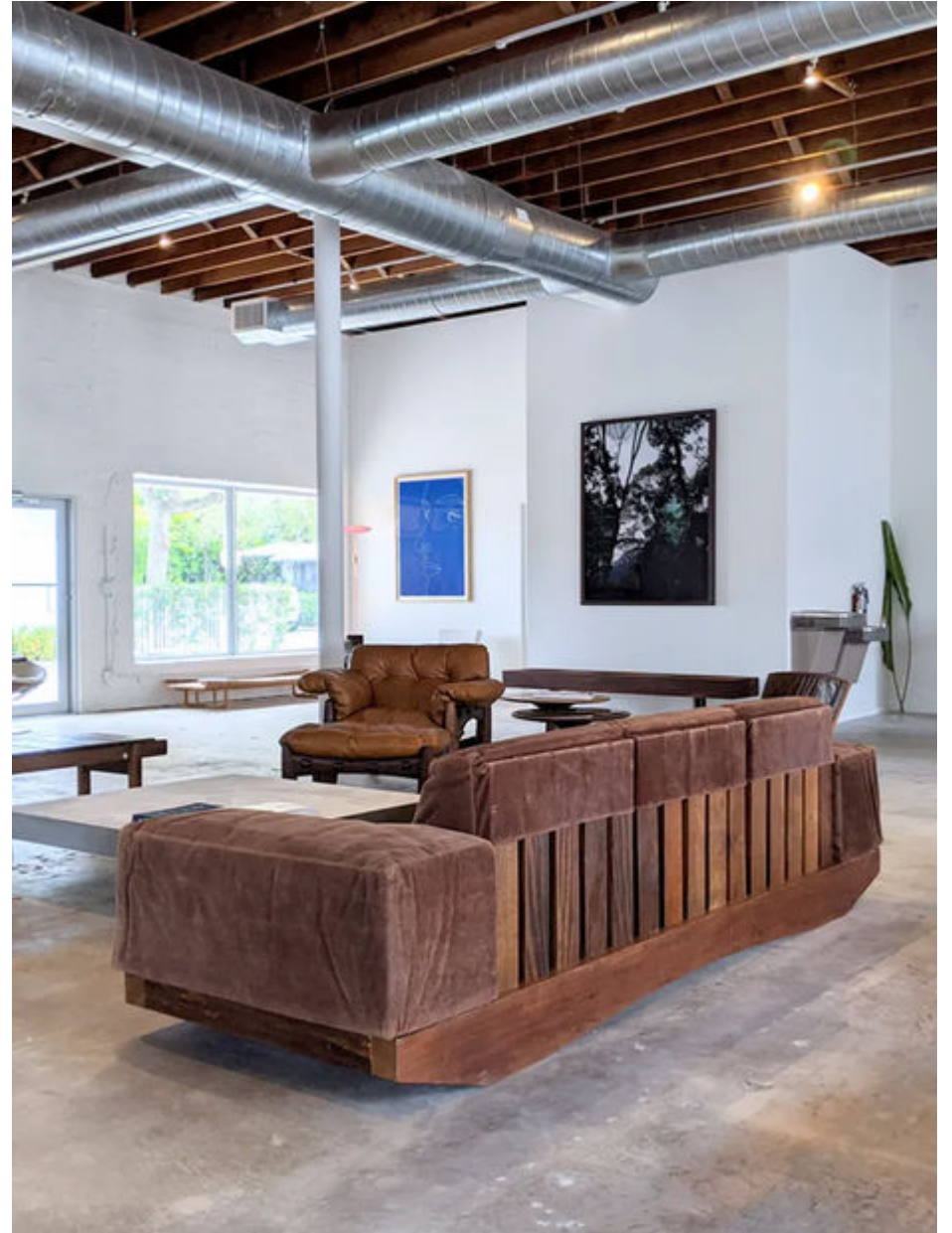
PRODUCT TYPE

Made To Order

LEAD TIME

14 weeks

ESPASSO



ESPASSO





Carlos Motta

Carlos Motta, a leading Brazilian architect, is known for his strong, durable and elegant designs; built in ecologically certified or reclaimed wood, he develops every step and detail of his pieces. Passionate about Brazil and its natural landscapes, he is also committed to a broader involvement in environmental conservation projects.

Motta graduated with a degree in architecture in São Paulo, 1976. He worked as a designer and cabinetmaker in Santa Cruz, California, while attending classes in building techniques at Cabrillo College. Later, Motta studied and did research in Finland on molded and rolled wood. Carlos has participated in numerous exhibitions in Brazil and abroad, including Brazil Faz Design, in Milan, Italy; International Biennial of Design, in Saint Etienne, France; and Object Brazil – 500 Years of Design, at Pinacoteca do Estado de São Paulo, Brazil. He has been awarded many important prizes, most notably the Hors Concours Award at the IX Prêmio do Museu da Casa Brasileira; First Place, Aluizio Magalhães Prize, at the V Competition of Industrial Design; and First Place, Best Furniture Design, at II Prêmio do Museu da Casa Brasileira. Motta is a professor of Planning at FAAP University in São Paulo.